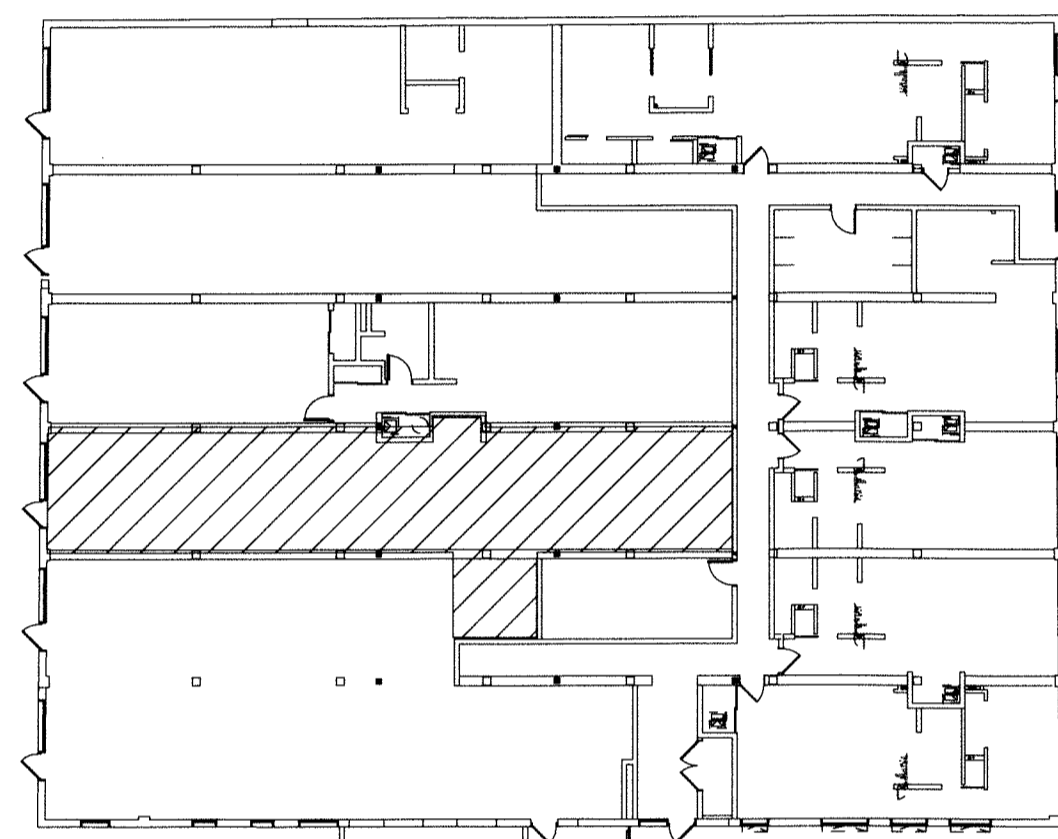


VICINITY MAP
NO SCALE



SUITE 400 LOCATION
NO SCALE

DATABLOCK

PROJECT DESCRIPTION
THE PROJECT IS A TENANT FINISH ON THE FIRST FLOOR OF THE FINN'S BUILDING LOCATED AT 430-502 COMMERCE STREET, WICHITA, KANSAS. THE EXISTING BUILDING CONSISTS OF A THREE STORY TYPE V-B BUILDING WITH NO BASEMENT. THE PREVIOUSLY APPROVED USE GROUPS IN THE BUILDINGS ARE B, M, A-2, AND R-2. THE FIRST FLOOR TENANT FINISH IS B OCCUPANCY OF APPROXIMATELY 1,370 SF. THE USE GROUPS ARE CONSIDERED SEPARATED. THE REQUIRED SEPARATION BETWEEN USE GROUPS IS ONE HOUR PER THE 2006 IBC TABLE 508.3. THE NEW TENANT WILL BE SEPARATED FROM THE ADJACENT SPACES AND THE FLOOR ABOVE WITH A ONE HOUR OCCUPANCY SEPARATION.

APPLICABLE CODES

THE INTERNATIONAL BUILDING CODE, 2006
THE NATIONAL ELECTRICAL CODE, 2011
THE UNIFORM PLUMBING CODE, 2000
THE INTERNATIONAL MECHANICAL CODE, 2006
THE INTERNATIONAL FIRE CODE, 2006
THE CITY OF WICHITA, KANSAS, 2006
2010 ADA STANDARDS
NFPA 13 SPRINKLER SYSTEMS

CODE DATA

ZONING
L.C. (LIGHT COMMERCIAL)

OCCUPANCY GROUP
B BUSINESS

TYPE OF CONSTRUCTION
2006 IBC TABLE 503

CONSTRUCTION TYPE
VB-FULLY SPRINKLED

TENANT AREA
1,370 S.F.

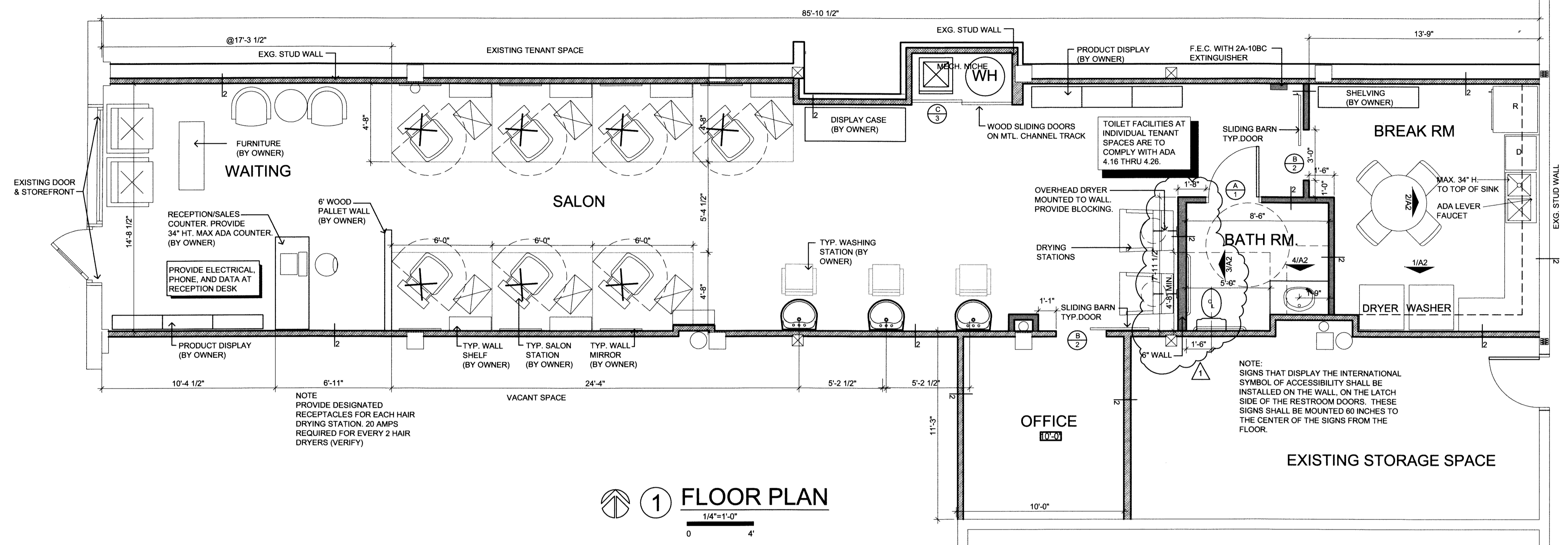
ACTUAL 1ST FLOOR BUILDING AREA:
7,306 S.F.

BLDG. OCCUPANT LOAD:
73

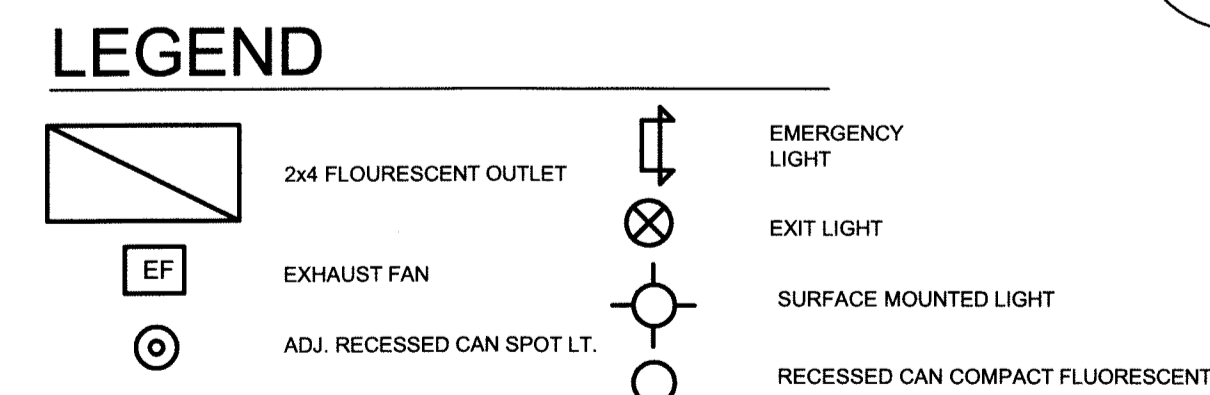
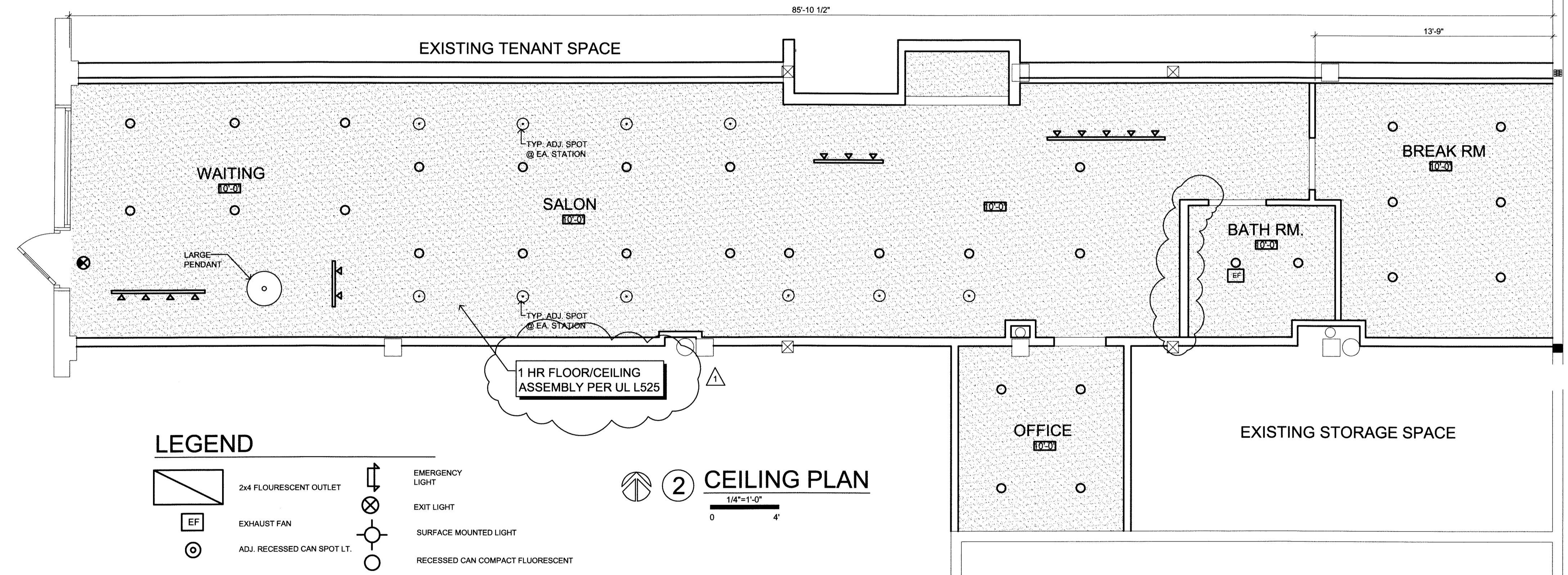
TENANT OCCUPANT LOAD:
14

GENERAL NOTES

- CONTRACTOR SHALL FIELD VERIFY EXISTING CONDITIONS AND NOTIFY ARCHITECT OF ANY DISCREPANCIES
- SIGNS THAT DISPLAY THE INTERNATIONAL SYMBOL OF ACCESSIBILITY SHALL BE INSTALLED ON THE WALL, ON THE LATCH SIDE OF THE RESTROOM DOOR. THESE SIGNS SHALL BE MOUNTED 60 INCHES TO THE CENTER OF THE SIGNS FROM THE FLOOR, PER ADA 4.30.6
- MECHANICAL SYSTEM DESIGN BY OTHERS. CONFIRM LOADS WITH OWNERS
- ELECTRICAL DESIGN BY OTHERS
- BATHROOM FIXTURES TO BE PROVIDED AND INSTALLED BY G.C. COORDINATE ELECTRICAL/PLUMBING CONNECTIONS.
- RECEPTION COUNTER/ ALL CABINETS, FIXTURES AND FURNITURE TO BE PROVIDED BY TENANT.



1 FLOOR PLAN
1/4"=1'-0"
0 4'



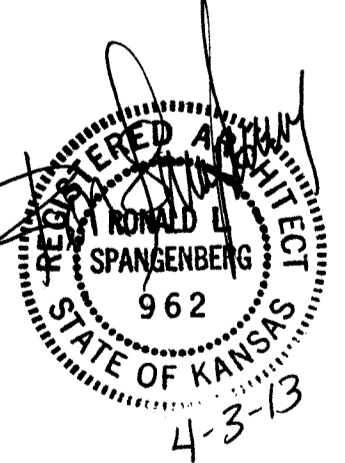
2 CEILING PLAN
1/4"=1'-0"
0 4'



SPANGENBERG PHILLIPS TICE
ARCHITECTURE
121 N Mead Ste. 201 Wichita KS 67202
T 316.267.4002 F 316.267.1509
www.sptarchitecture.com

THE FINN BUILDING - SALON

403 S. COMMERCE ST. SALON - SUITE 400 - WICHITA, KANSAS 67202



CITY COMMENTS
3 APRIL 13
PERMIT
12 MAR 2013

FLOOR, CEILING
PLANS

A1.1